

Jin-pole Instructions

David Roseman
Photos by Deanna Forester
May 16, 2007

Important Safety Information

Two members designated by the Regatta Committee must be present when the jin-pole is being used.

No one should be under the erected jin-pole or its load.

Don't step masts in windy weather, or if waves present at the dock.

Assume at all times that the device can fail, and that the load can drop.

All users of this device do so at their own risk.

The boat should be tied to the dock with the bow facing north. Use a bow line, stern line, and at least one spring line.

The mast opening in the cabin deck should be even with the jin-pole.

Check all fasteners for tightness.

Check all lines for evidence of wear.

Secure the base plate to the deck with 4 ½" bolts. The arrow on the baseplate must face the lake (west).



Secure the green-striped line to the south deck cleat as shown.



While one person pulls on the red-striped guy rope, the other “walks” the pole to a vertical position.

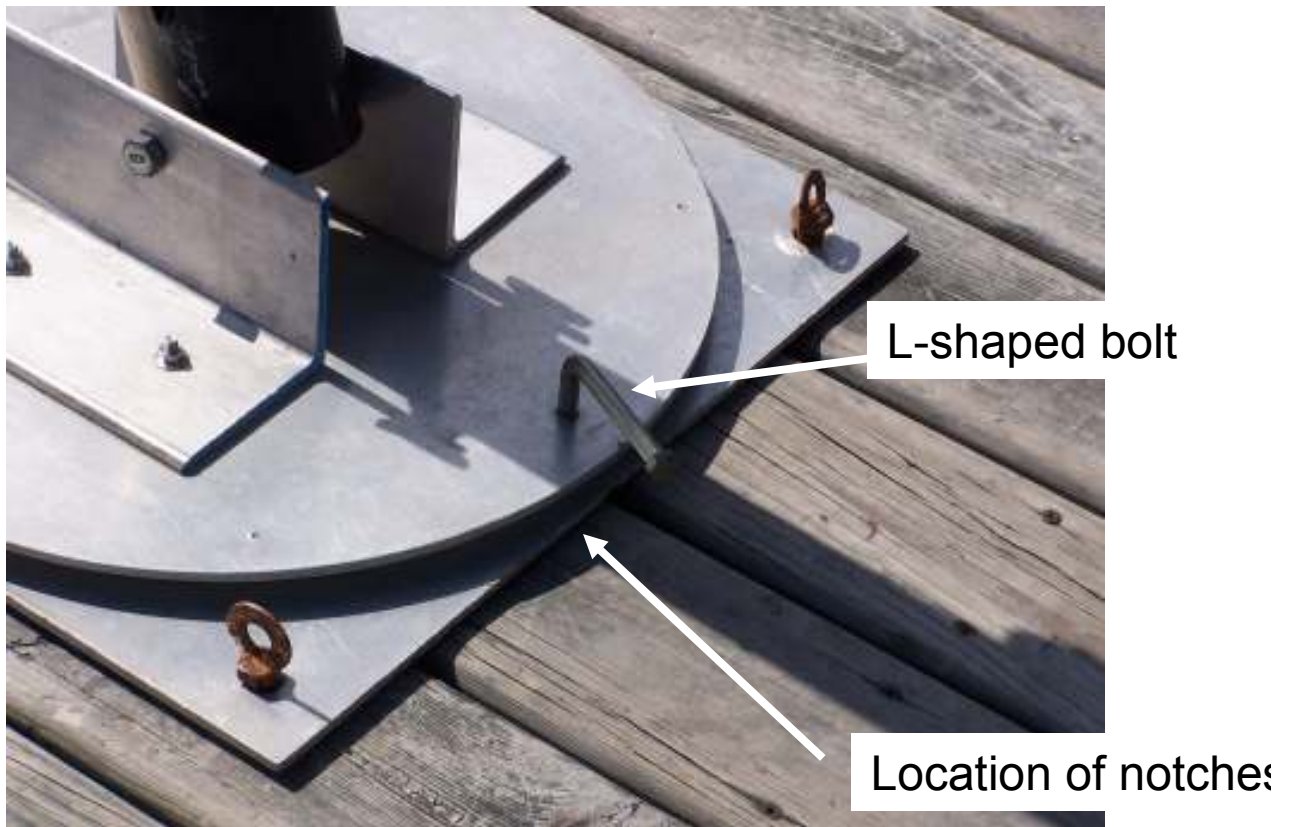


Both users hold the pole in a vertical position, and rotate it 90 degrees clockwise.



The red-striped rope is then fastened to the north cleat, in the same way that the green-striped rope was attached.

The notches on the baseplate and circular plate are aligned, and the L-shaped bolt is tightened into the hole in the baseplate.



Attach any masthead fittings, and check to ensure that all standing and running rigging is attached and on the correct side of the spreaders. Attach the rope sling below the spreaders, with the forward side of the mast facing up.



Make sure that the ratchets are engaged on both winches, then start raising the mast.

IT IS NOT NECESSARY OR SAFE FOR ANYONE TO STAND UNDER THE JIN-POLE OR MAST.



Insert the base of the mast into the opening in the cabin deck



Lower the mast, with someone in the cabin guiding the butt into the mast step.

Attach the forestay, backstay, and upper shrouds. The mast is now secure.

Lower the sling.

When all mast have been stepped, lower and remove the jin-pole. This is the reverse of erecting the pole.

Authorized operators 2007

The following have been authorized by the Regatta Committee to operate the jin-pole:

- Bill Bluhm
- Bill Bullard
- Jeff Forrester
- Leonard Hilton
- Mike LaHaye
- Frode Maaseidvaag
- Jack Patterson
- David Roseman
- Joan Roseman
- Tony Sisson